

Affiche - Profil santé des communautés anglophones minoritaires au Québec

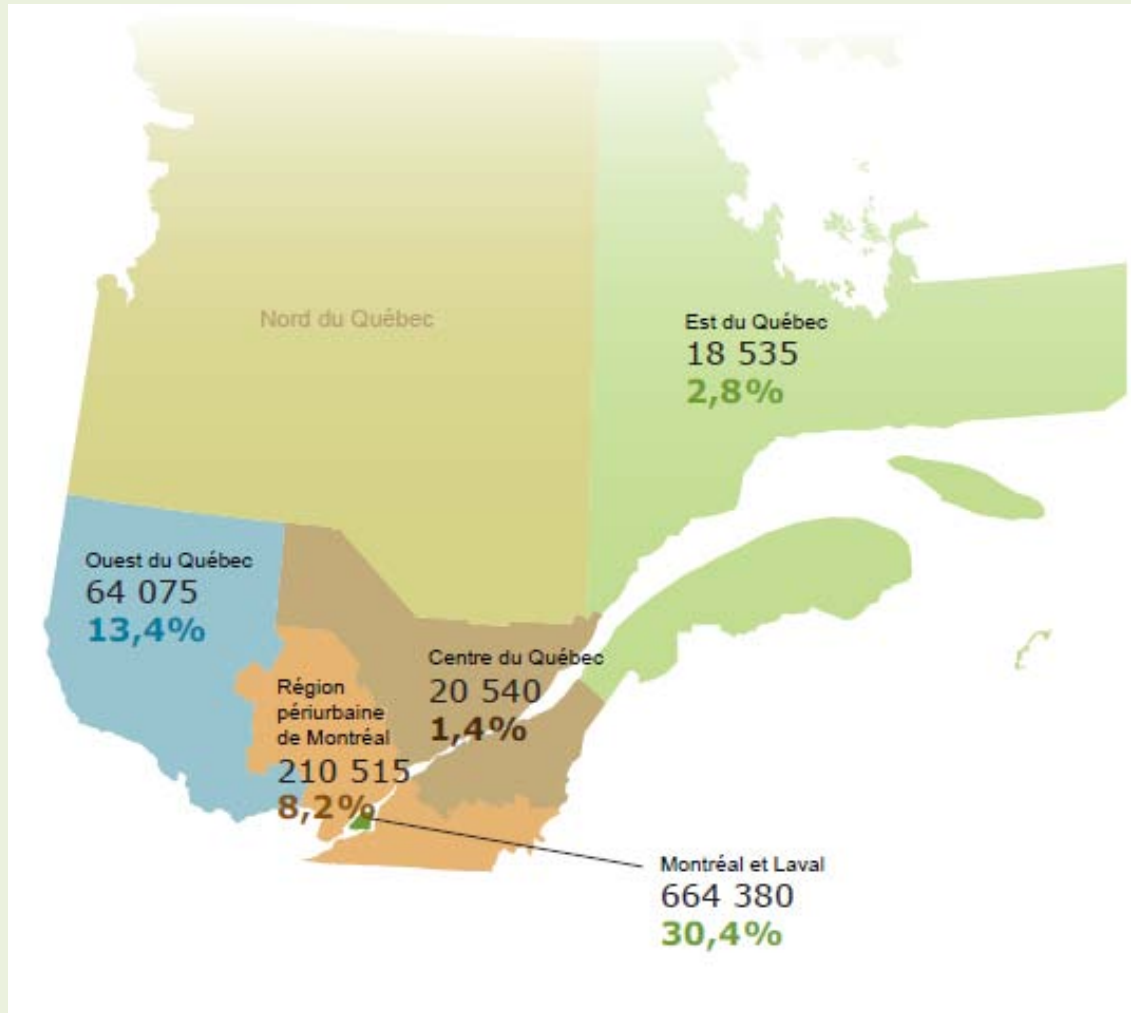


Louise Bouchard
Isabelle Gaboury
Marie-Hélène Chomienne
Isabelle Gagnon-Arpin



Santé
Canada

Health
Canada



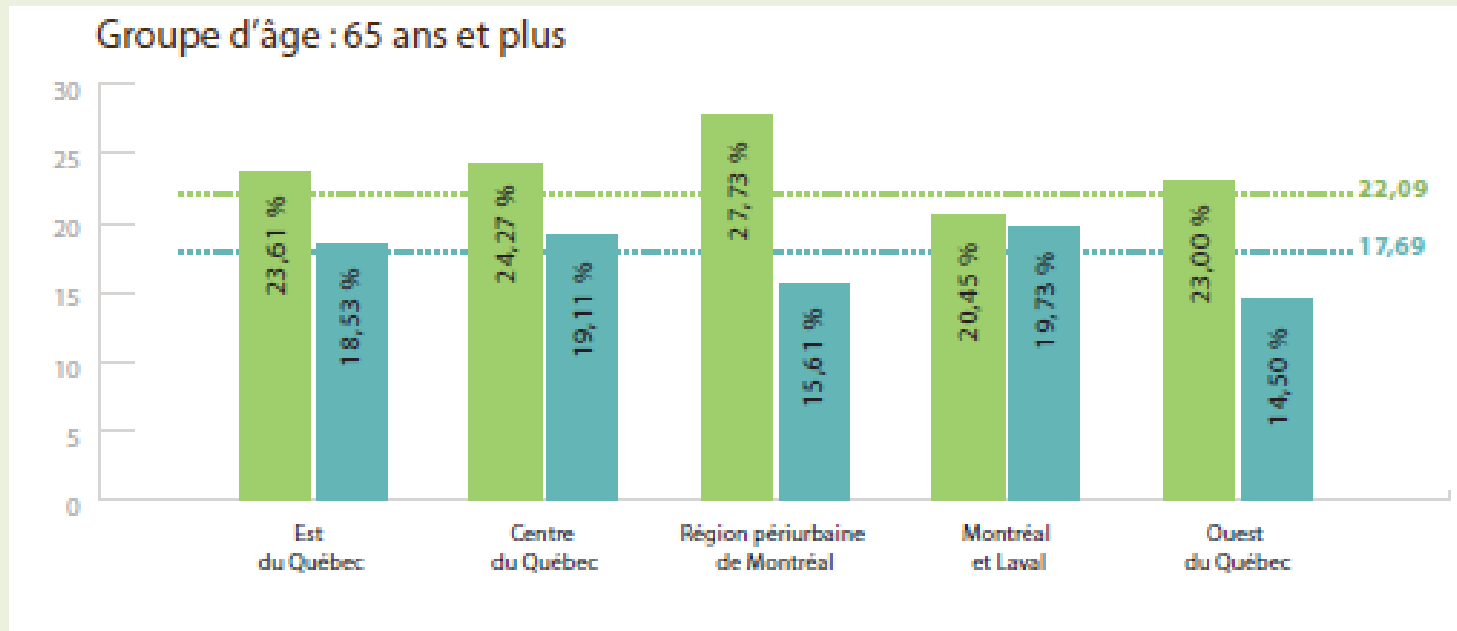
© L Bouchard, I Gaboury, MH Chomienne, I Gagnon-Arpin (2009) Profil santé des communautés anglophones minoritaires au Québec. Réseau de recherche interdisciplinaire sur la santé des francophones en contexte minoritaire au Canada (RISF).

Variables présentées

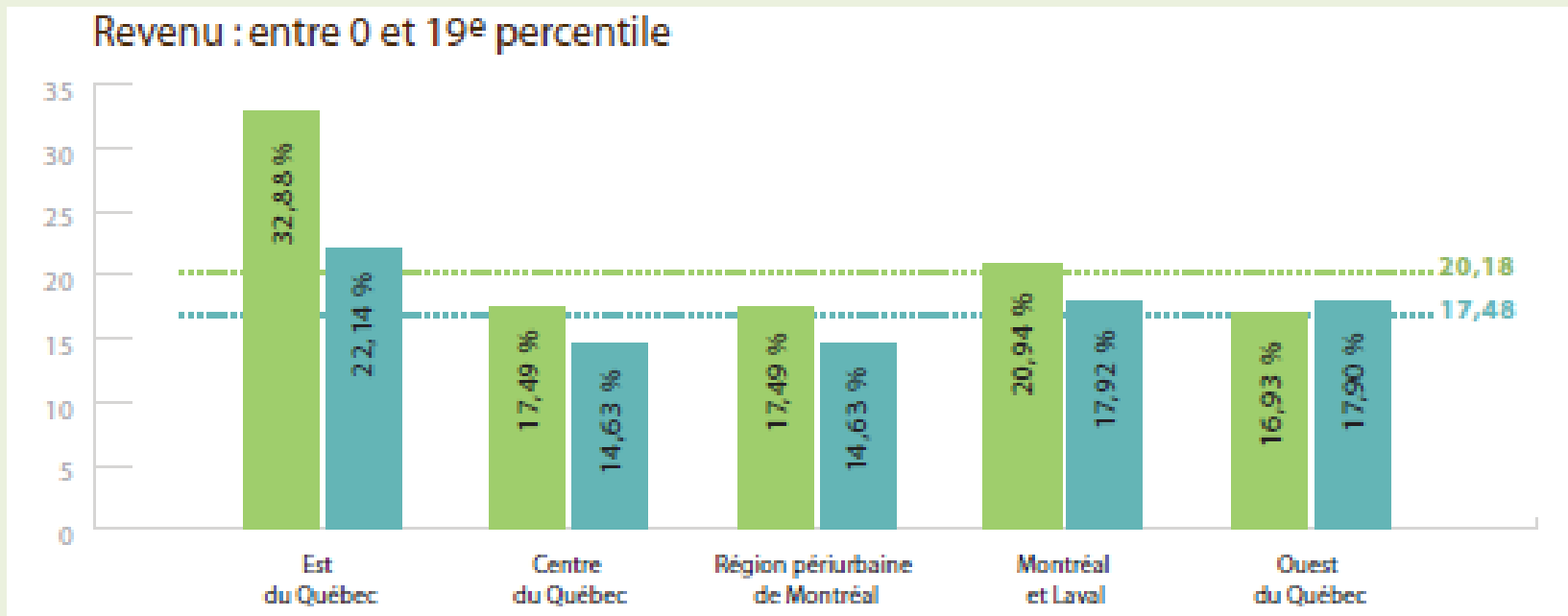
4 grandes catégories:

- Socioéconomiques
- Style de vie
- Santé
- Services de santé

Variables socioéconomiques

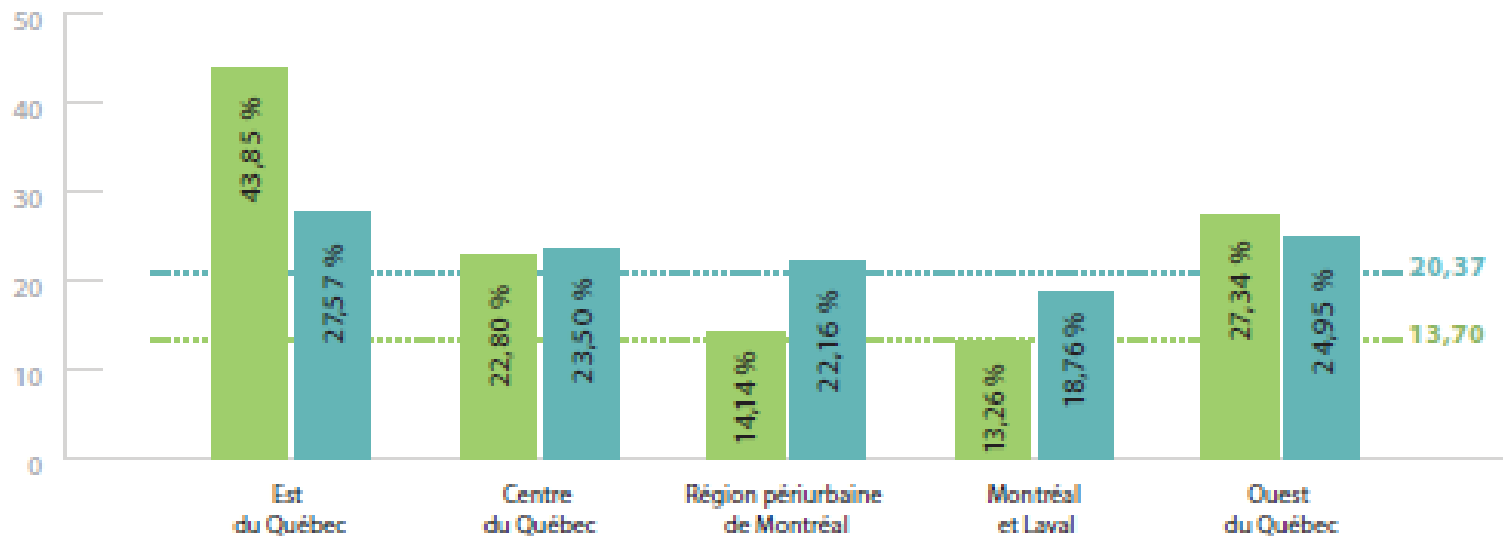


Variables socioéconomiques

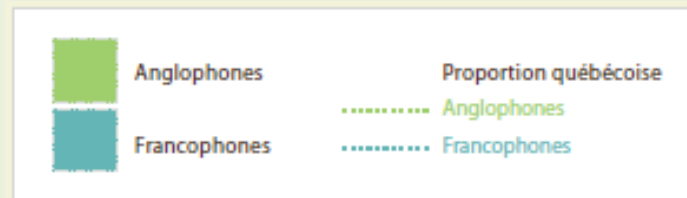
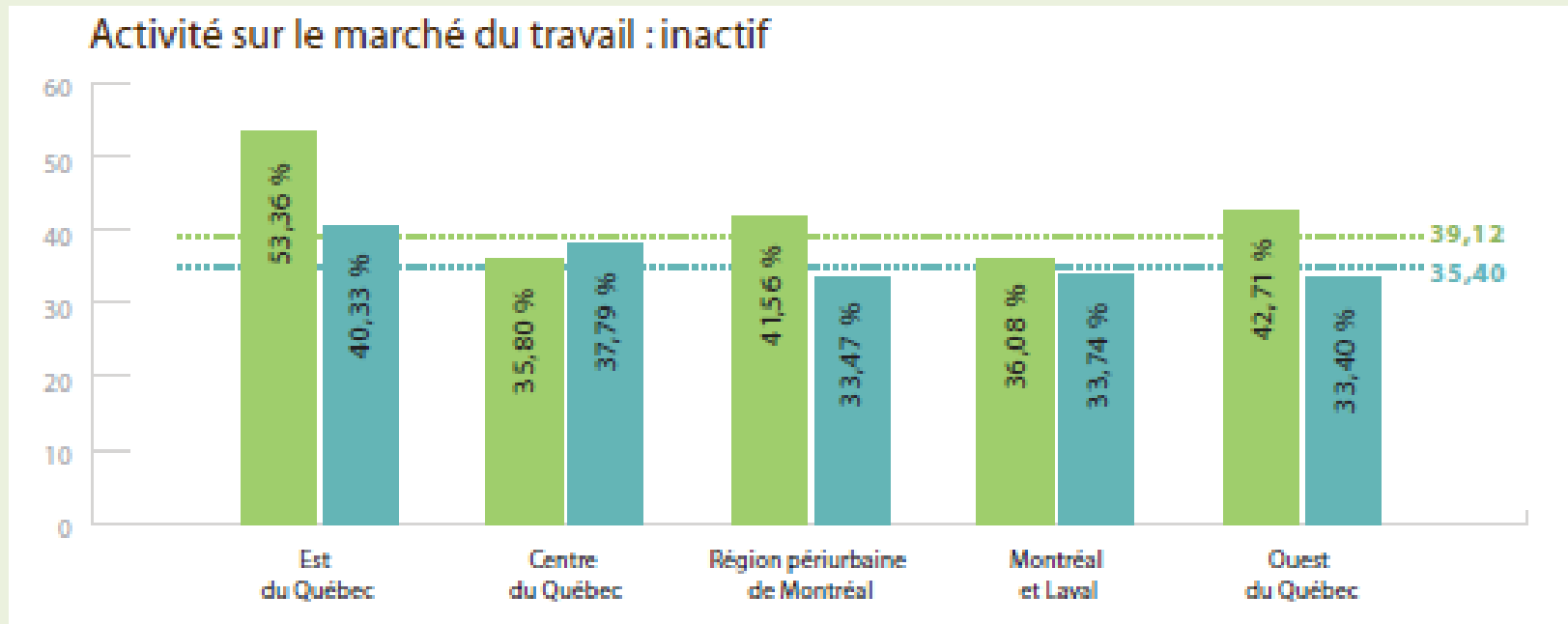


Variables socioéconomiques

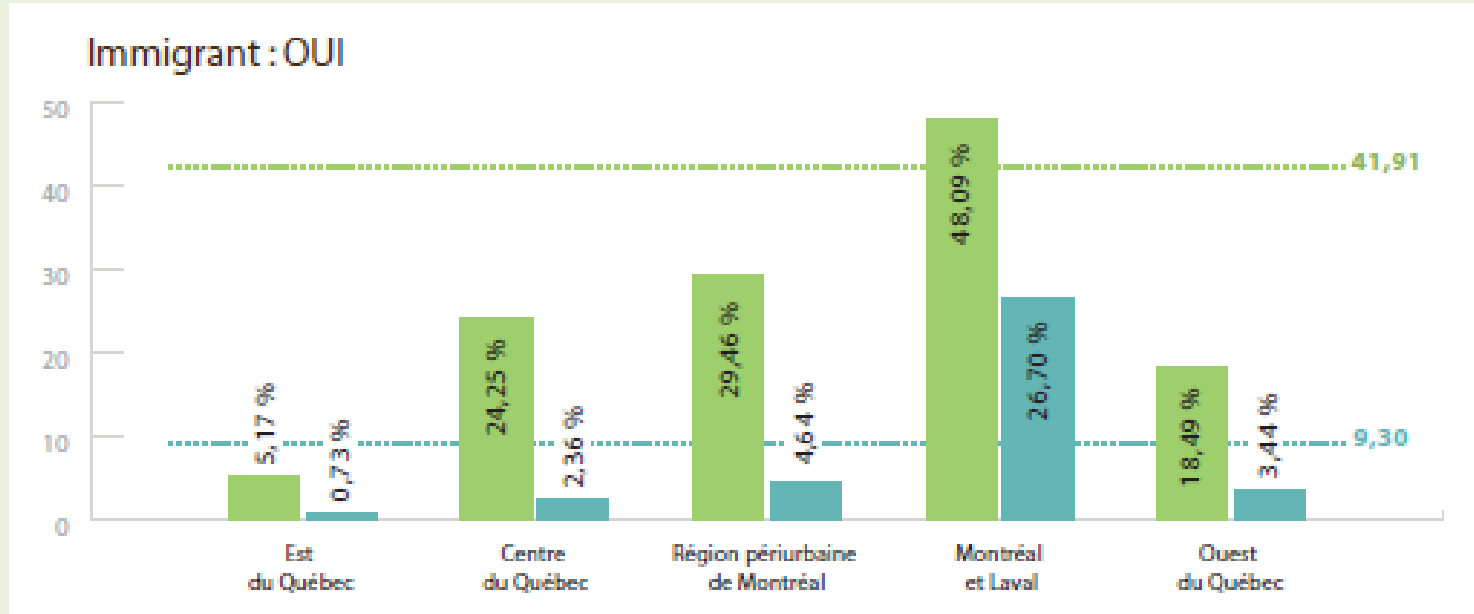
Éducation : moins d'un diplôme secondaire



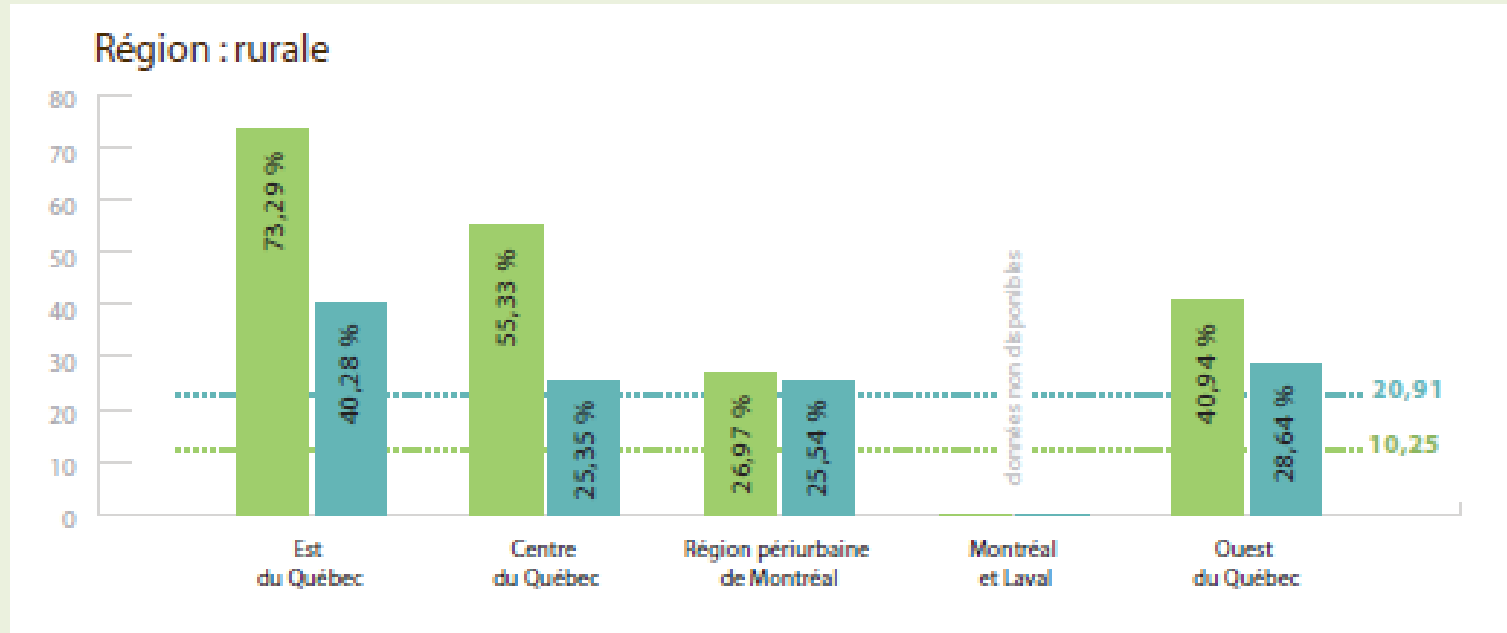
Variables socioéconomiques



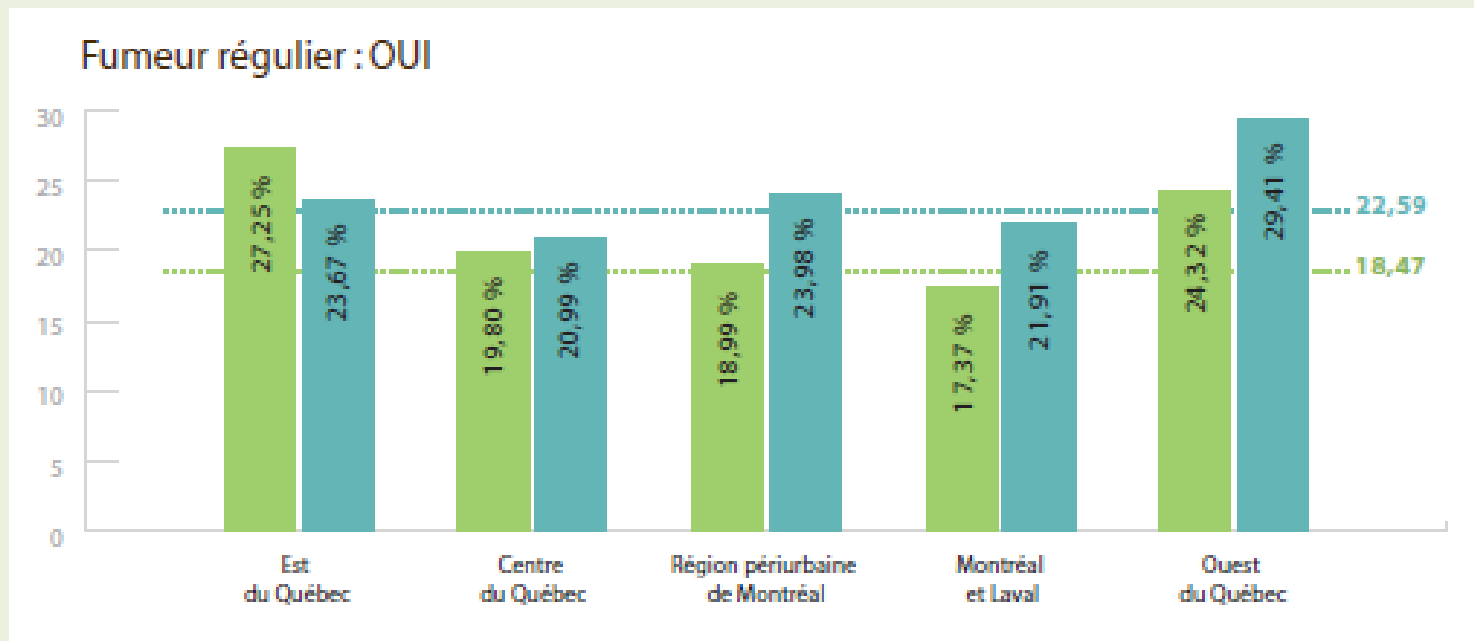
Variables socioéconomiques



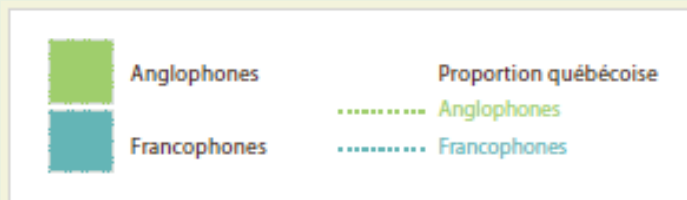
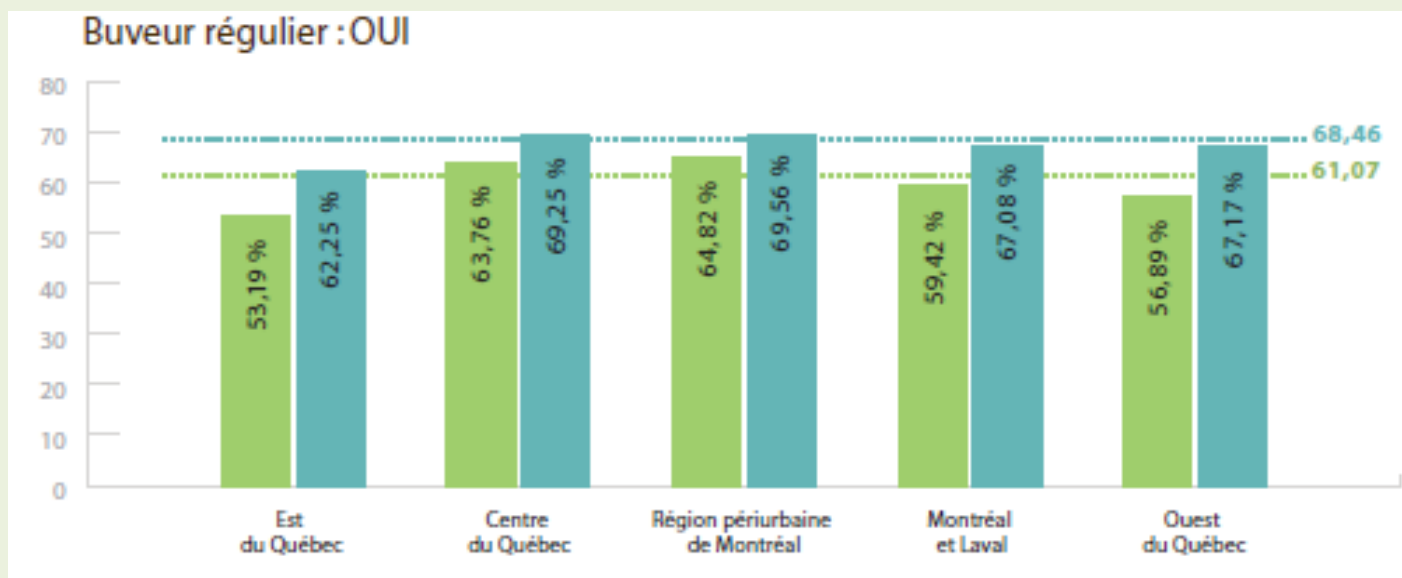
Variables socioéconomiques



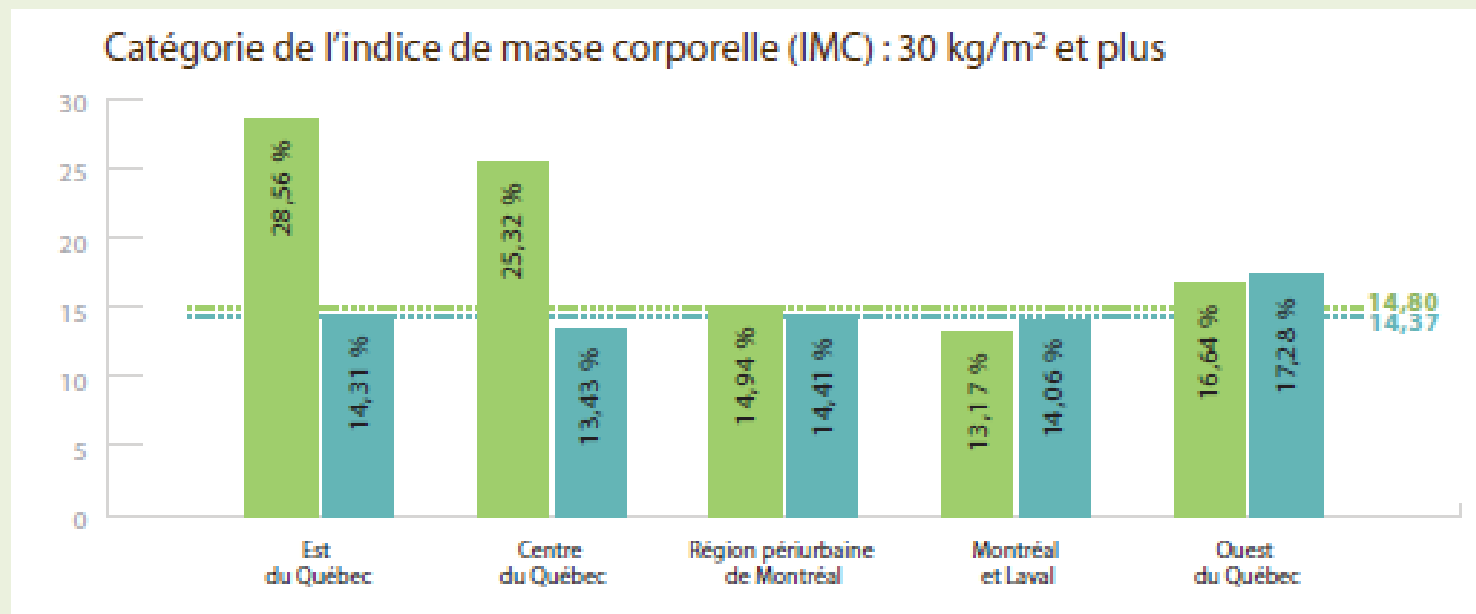
Variables du style de vie



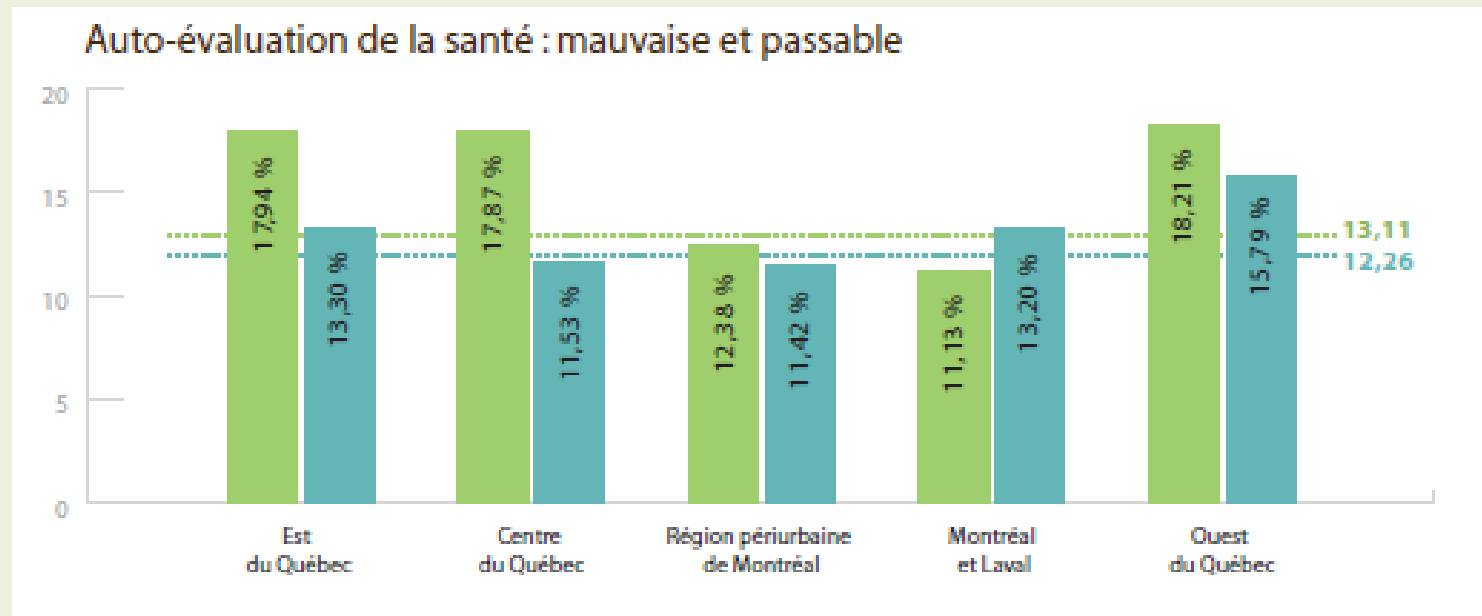
Variables du style de vie



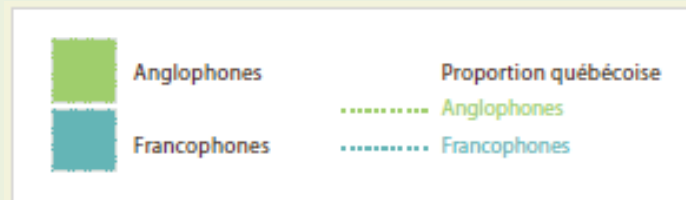
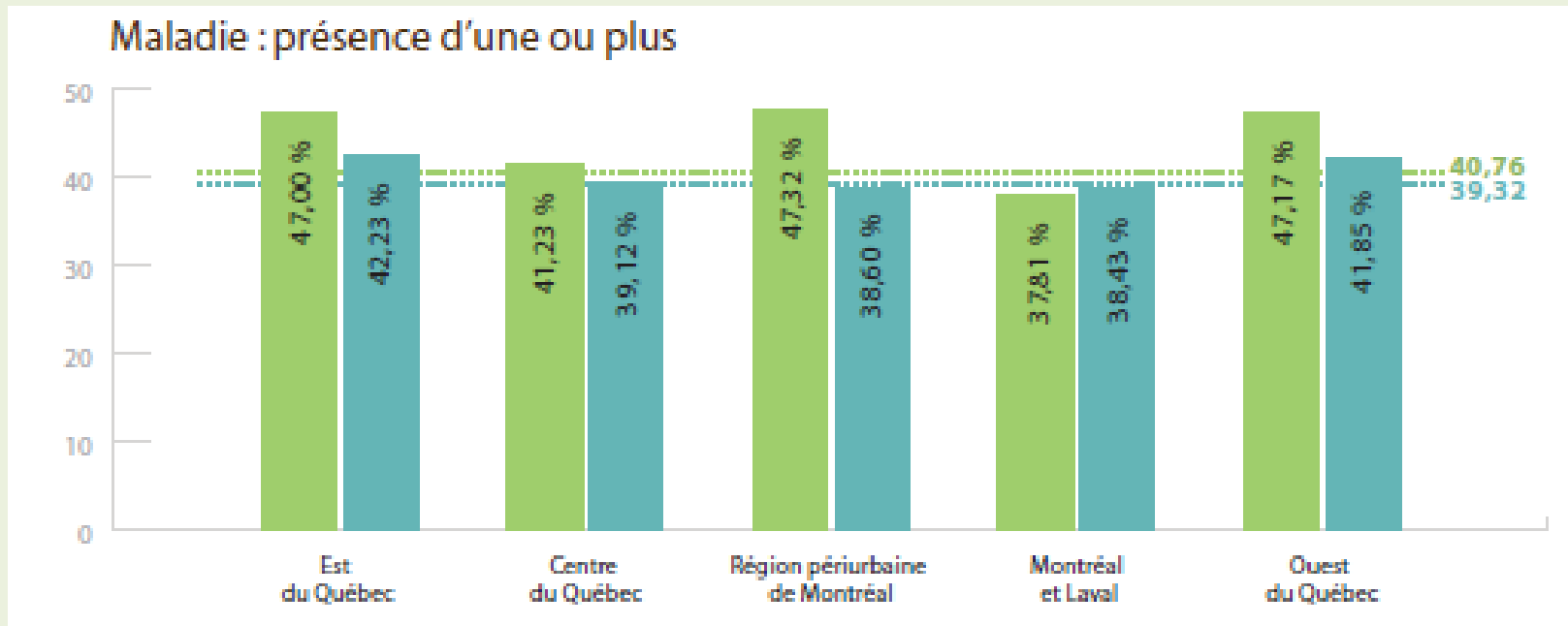
Variables du style de vie



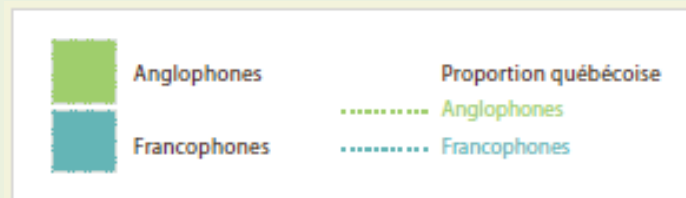
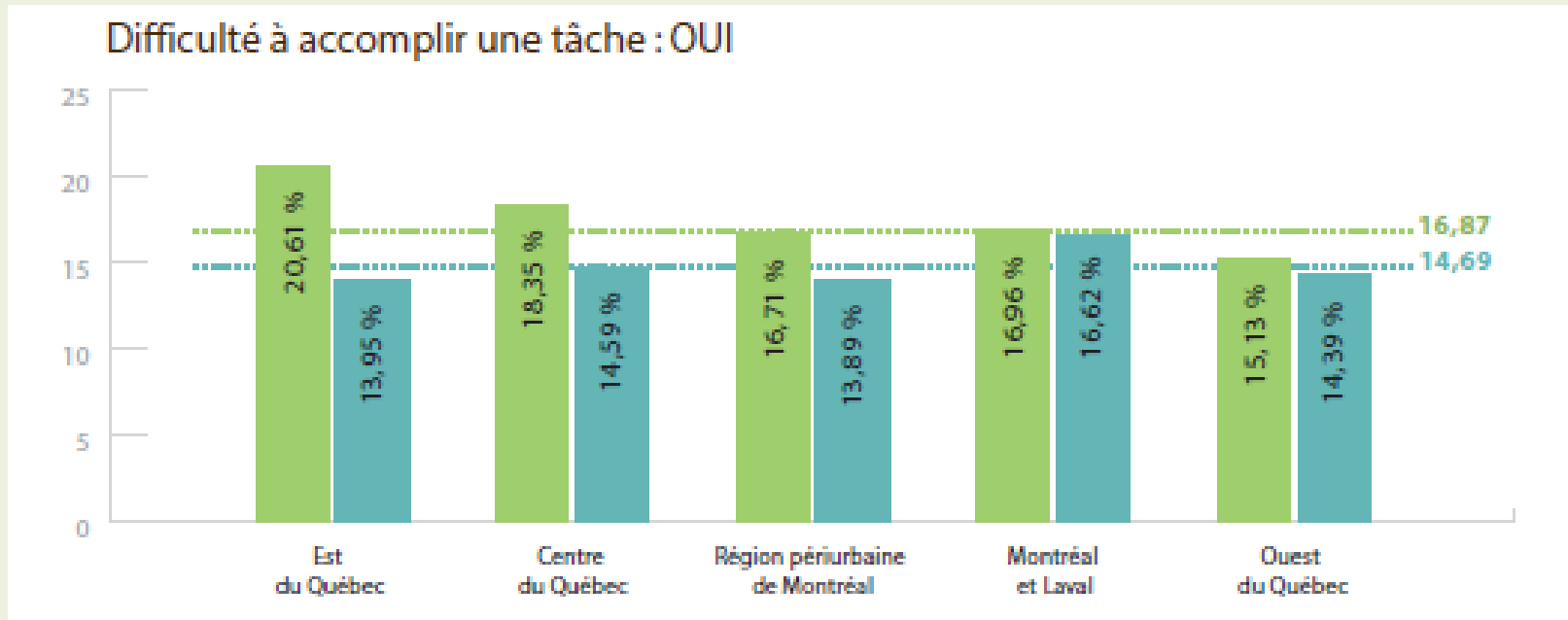
Variables de santé



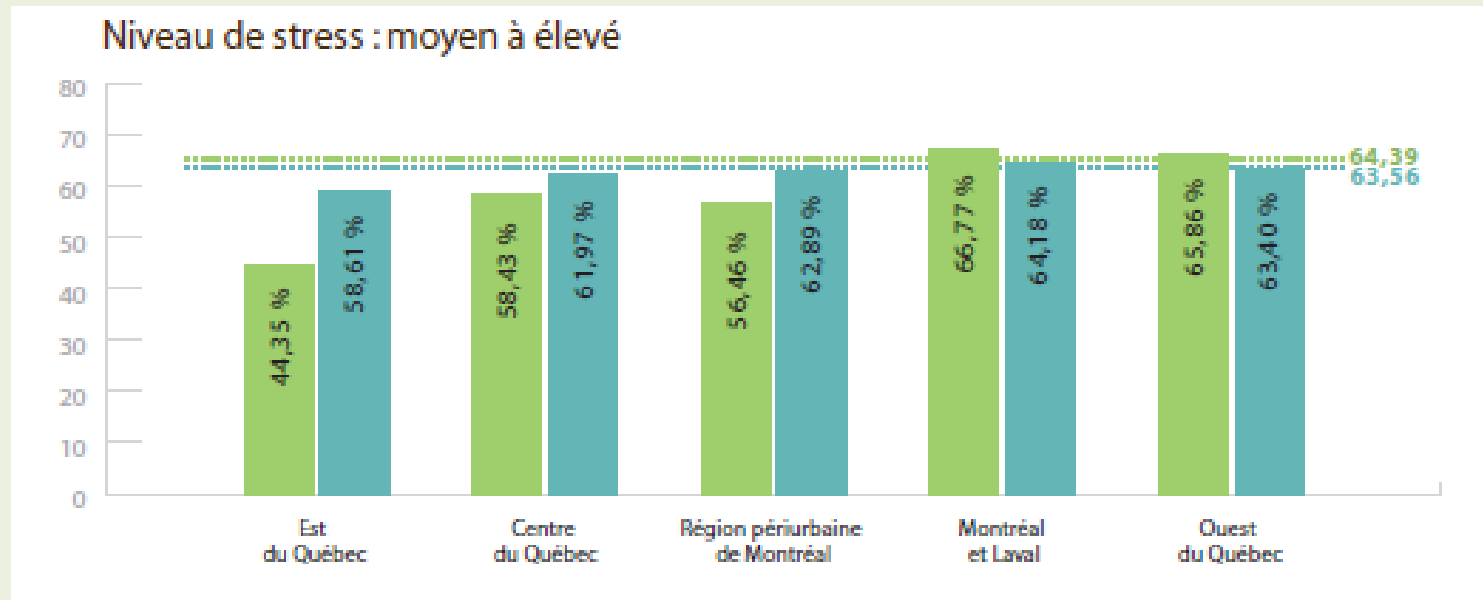
Variables de santé



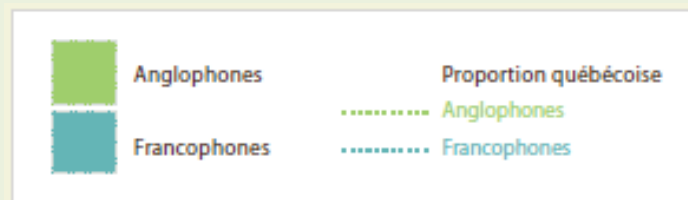
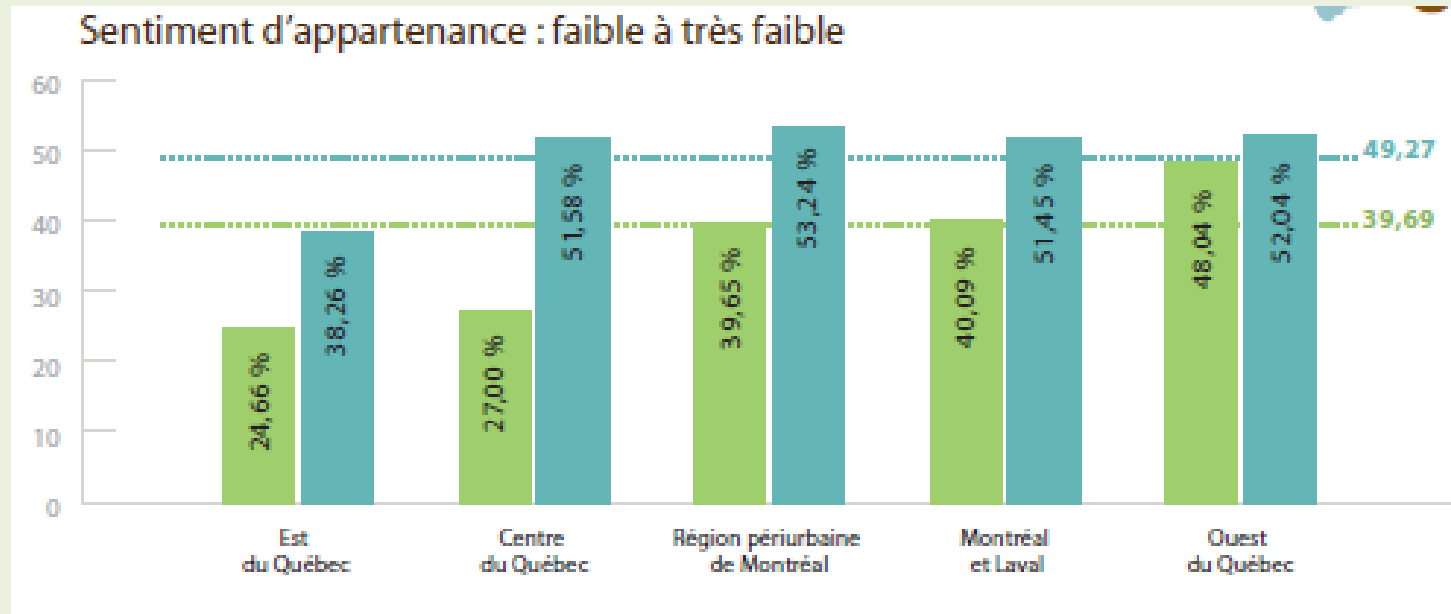
Variables de santé



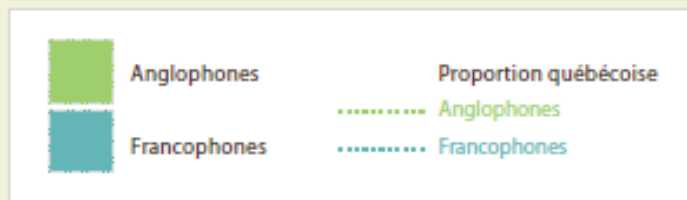
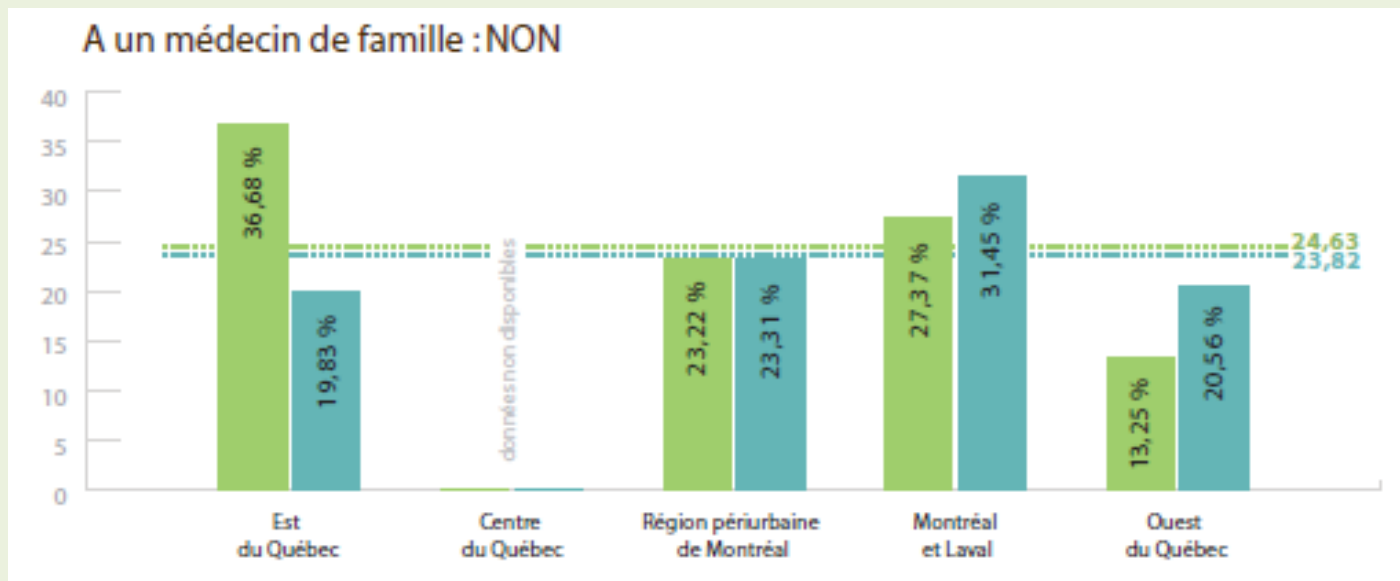
Variables de santé



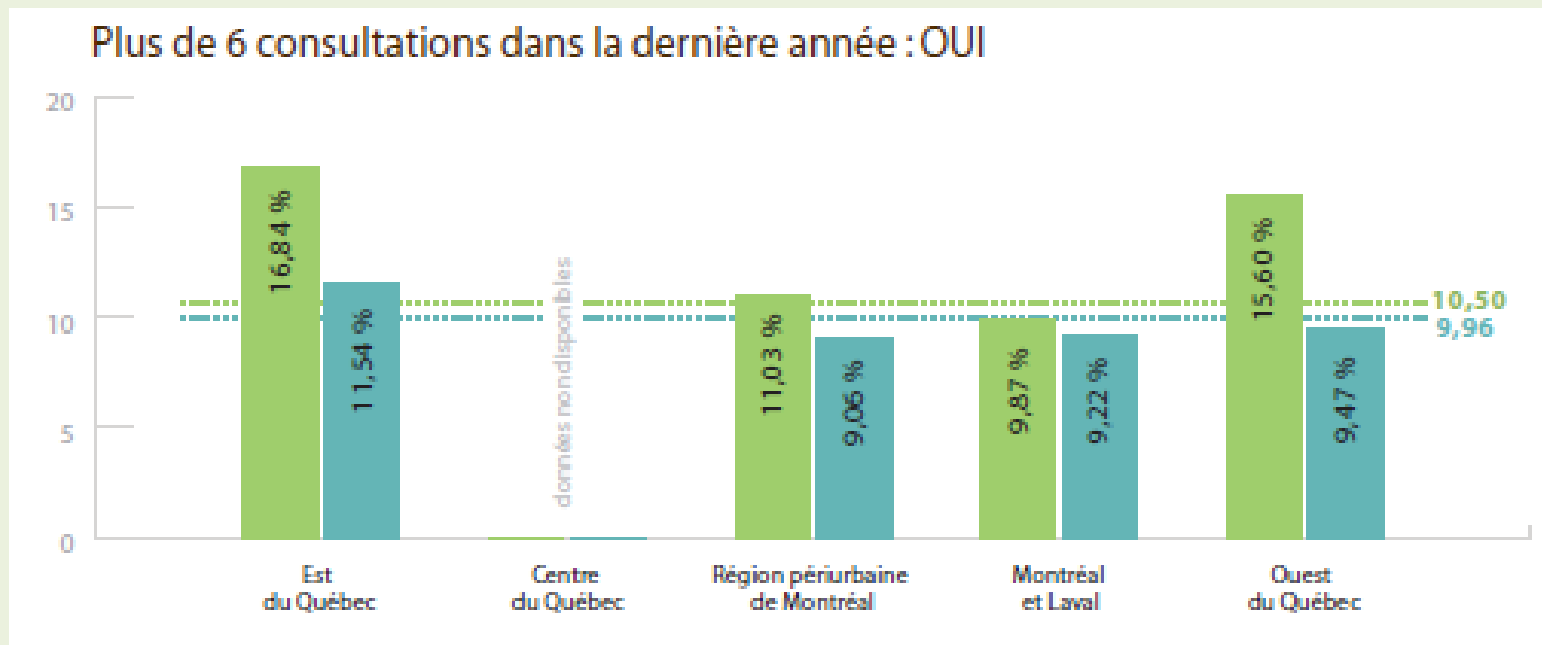
Variables de santé



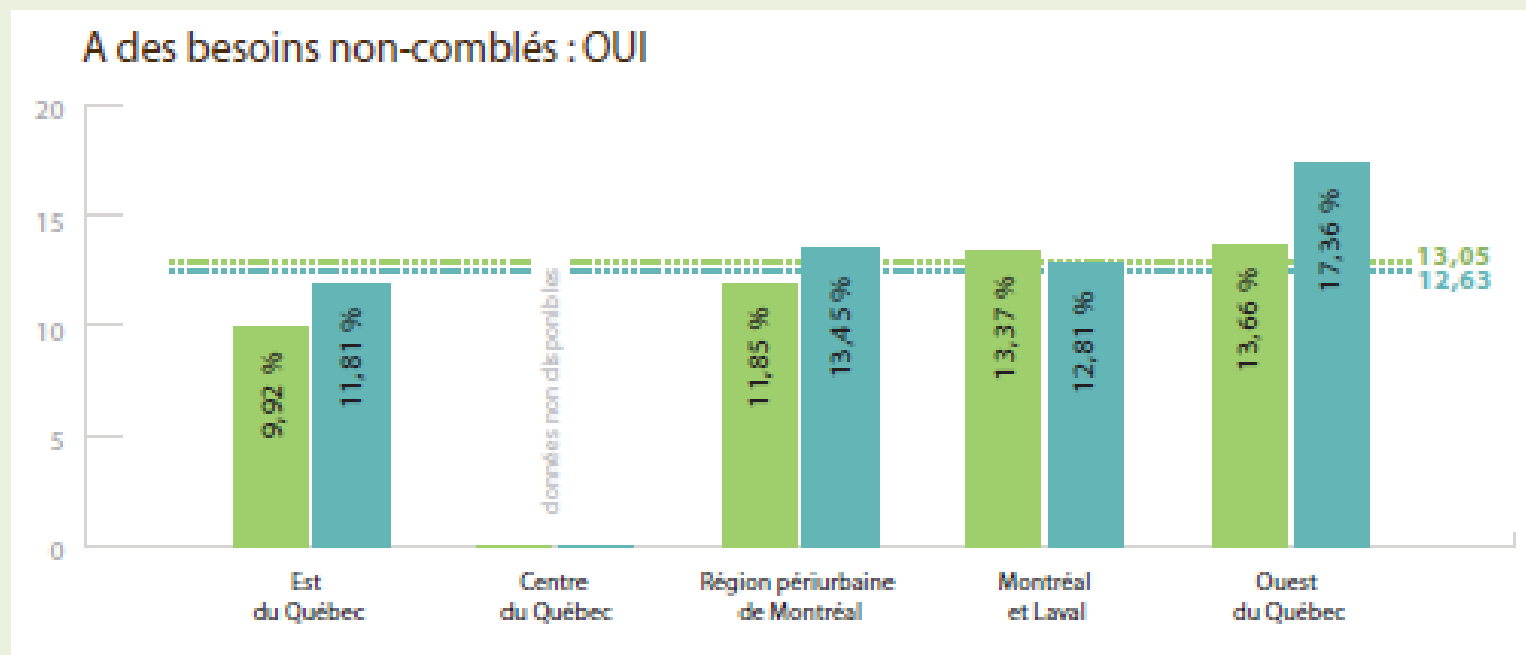
Variables - services de santé



Variables - services de santé



Variables - services de santé



Contacts

Louise Bouchard

Sociologie, Institut de recherche sur la santé des populations

Université d'Ottawa

1, rue Stewart, pièce 225

Ottawa (Ontario) K1N 6N5

louise.bouchard@uottawa.ca

613 562-5800, poste 1642

RISF

Courriel : risf@uottawa.ca